

10 THERMA

Monopolar RF / 6.78MHz / 400W



Tentech Item

10 THERMA

 <p>10 THERMA Monopolar RF</p>	 <p>10 THERA 2 Line HIFU</p>	 <p>10 PL 168 Cell Fractional IPL</p>	 <p>10 CELL 3cm x 3cm CO2 Fractional Laser</p>	 <p>ONE THERA Dual Mode Ultrasound System</p>	 <p>TEN HI Fractional & Thermal RF</p>	 <p>10 SONO DSS & NBS Dual Mode System</p>	 <p>LIPO THERA Dual Mode Ultrasound System</p>	 <p>10 LUX High Intensity & Multiple Light Therapy Device</p>	 <p>10 LUX HAIR PhotoBioModulation Device</p>
 <p>Regevan LED Mask Dr. Oracle LED Mask 4,474 LED Lights</p>	 <p>10 mono Thread Mono Thread [Registered for NMPA]</p>	 <p>10 cog Thread Asymmetrical Cog Thread</p>	 <p>Rhino fill Premium Regevan fill volume MAX Regevan fill volume PRO Regevan fill volume UP Regevan fill Fine Monophasic Filler [for Export]</p>	 <p>Regevan^{Ph} Polynucleotide Sodium</p>		 <p>Regevan^C Growth Factor Ointment</p>	 <p>Regevan^S Growth Factor Spray</p>	 <p>Regevan^{ALO CARE} Growth Factor Ampoule</p>	

10 THERMA

Monopolar RF / 6.78MHz / 400W

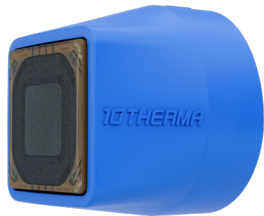
- ✓ Non-invasive
- ✓ Non-surgical skin elasticity increase
- ✓ No downtime
- ✓ Natural effect



What is 10THERMA

10THERMA

10THERMA is a monopolar RF device which generates high heat to regenerate collagen in the dermis in a non-invasive method



Face Tip 5.0



Eye Tip 0.25

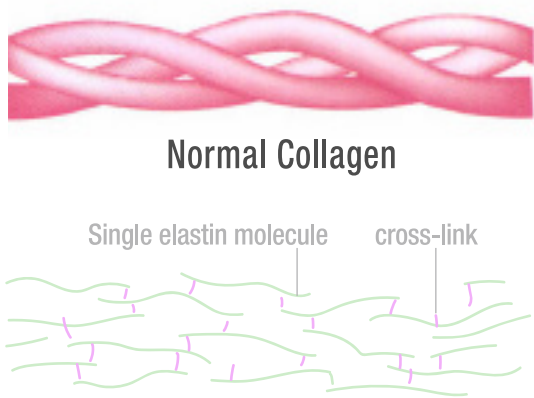
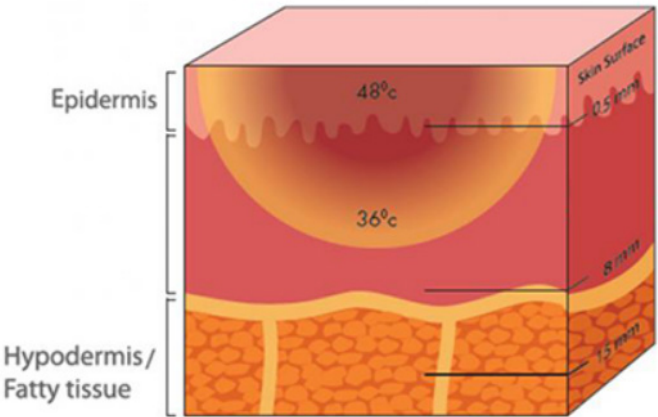


Body Tip 20.0

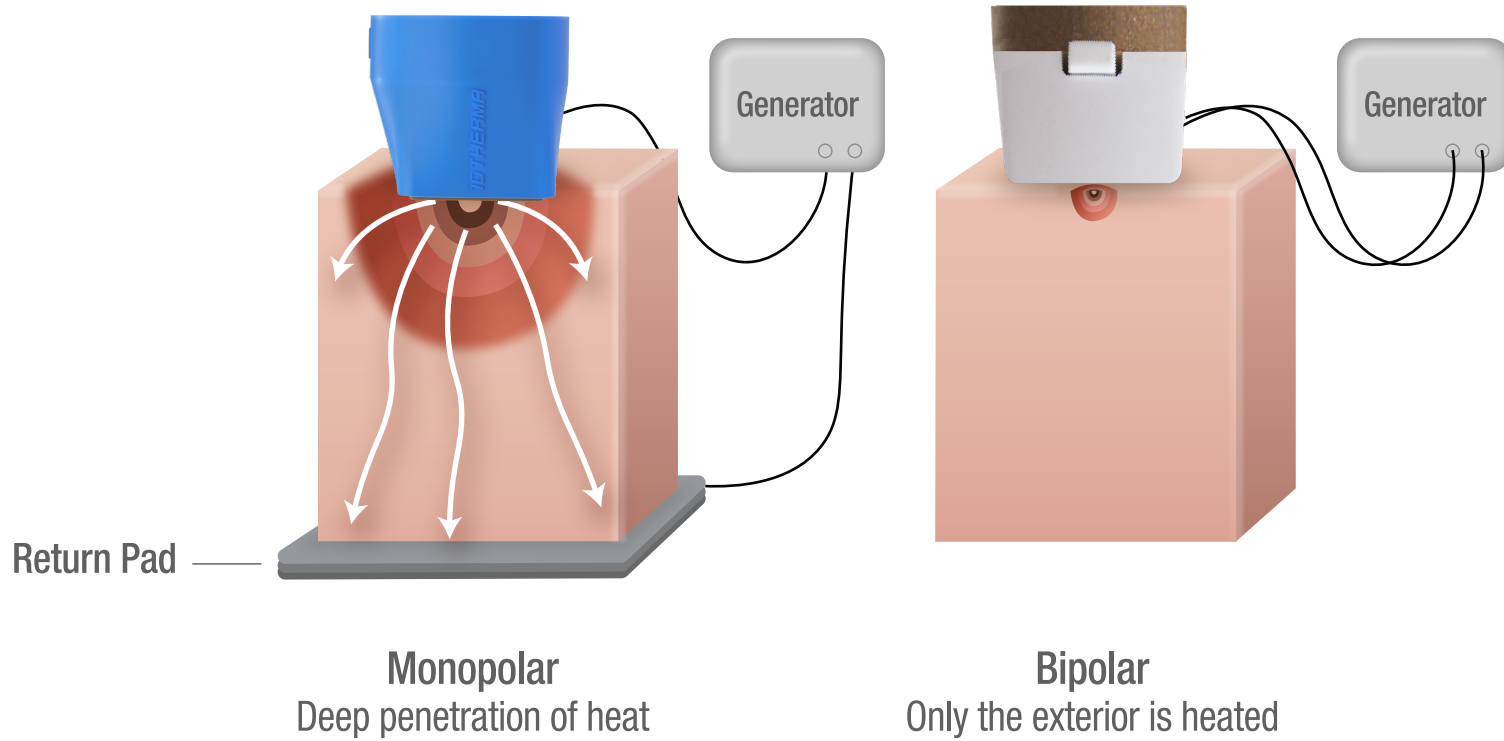
PRINCIPAL OF RF

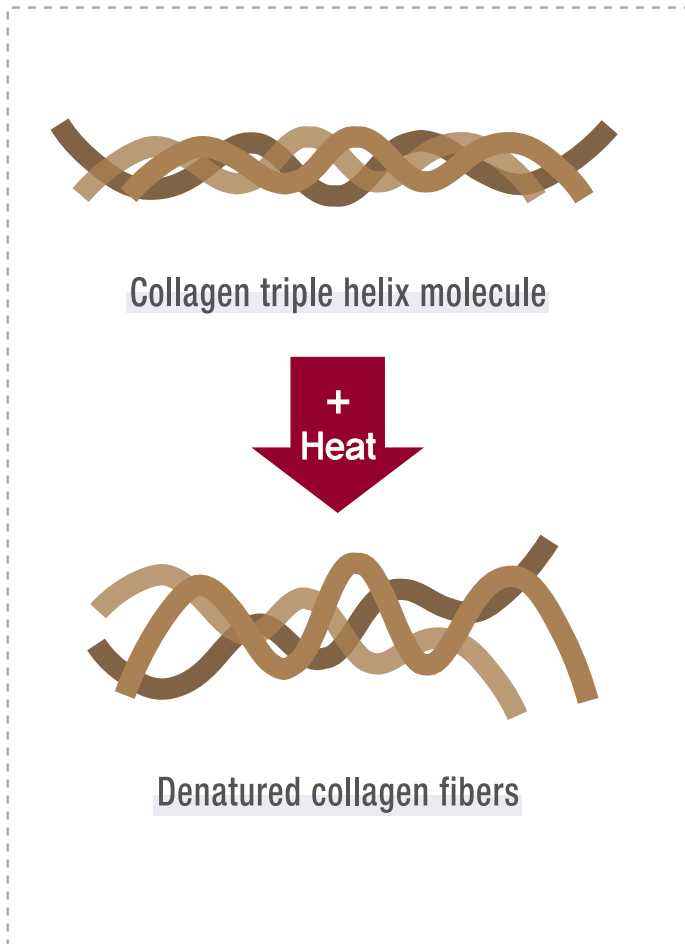
10 THERMA

RF means 'Radiofrequency', and High Frequency is a type of it. It improves skin elasticity and reduces wrinkles through the degeneration of skin tissue using heat of



[Monopolar VS Bipolar]





Initial reaction: immediate collagen contraction

- The collagen is denatured and contracted.
- Elasticity increases as the skin contracts.
- As the fibrous septum contracts, the skin contour is improved.

Secondary wound healing reaction: collagen increase and remodeling

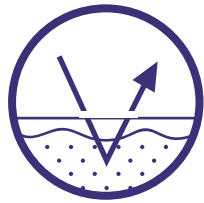
- Over time, collagen increases, increasing skin elasticity.
- Collagen density improves over time.

"Histological and Ultrastructural Evaluation of the Effects of a Radiofrequency– Based Non–ablative Dermal Remodeling Device" Archives of Dermatology / 2004.02, B.Zelickson, M.D. et al

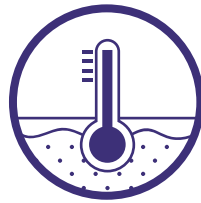
Advantages of 10 THERMA

10 THERMA

[Safe & Effective Treatment]



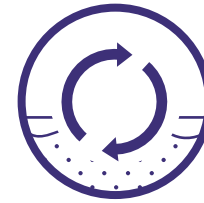
Tip Pressure Sensor



Tip Temperature Sensor

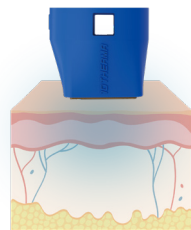


Skin Impedance
Checking System

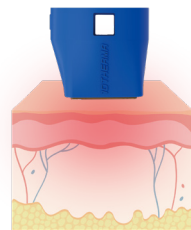


Continuous shot function

[Pain Relief system]



Pre Cooling x 2



RF + Cooling x 3

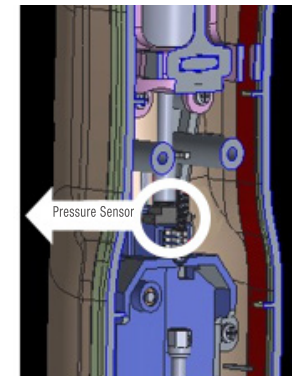
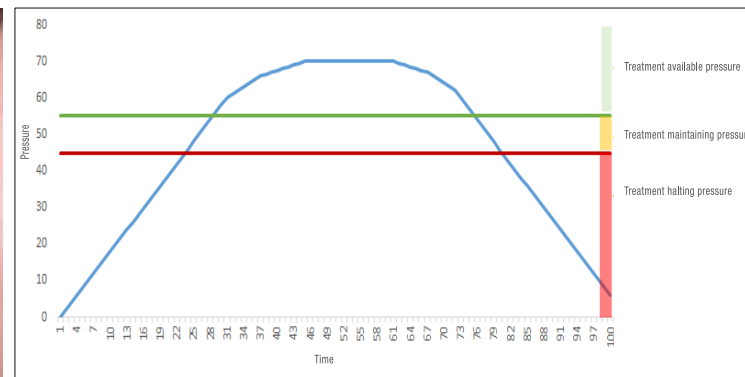


Post Cooling x 2

Technology (Pressure titration treatment)

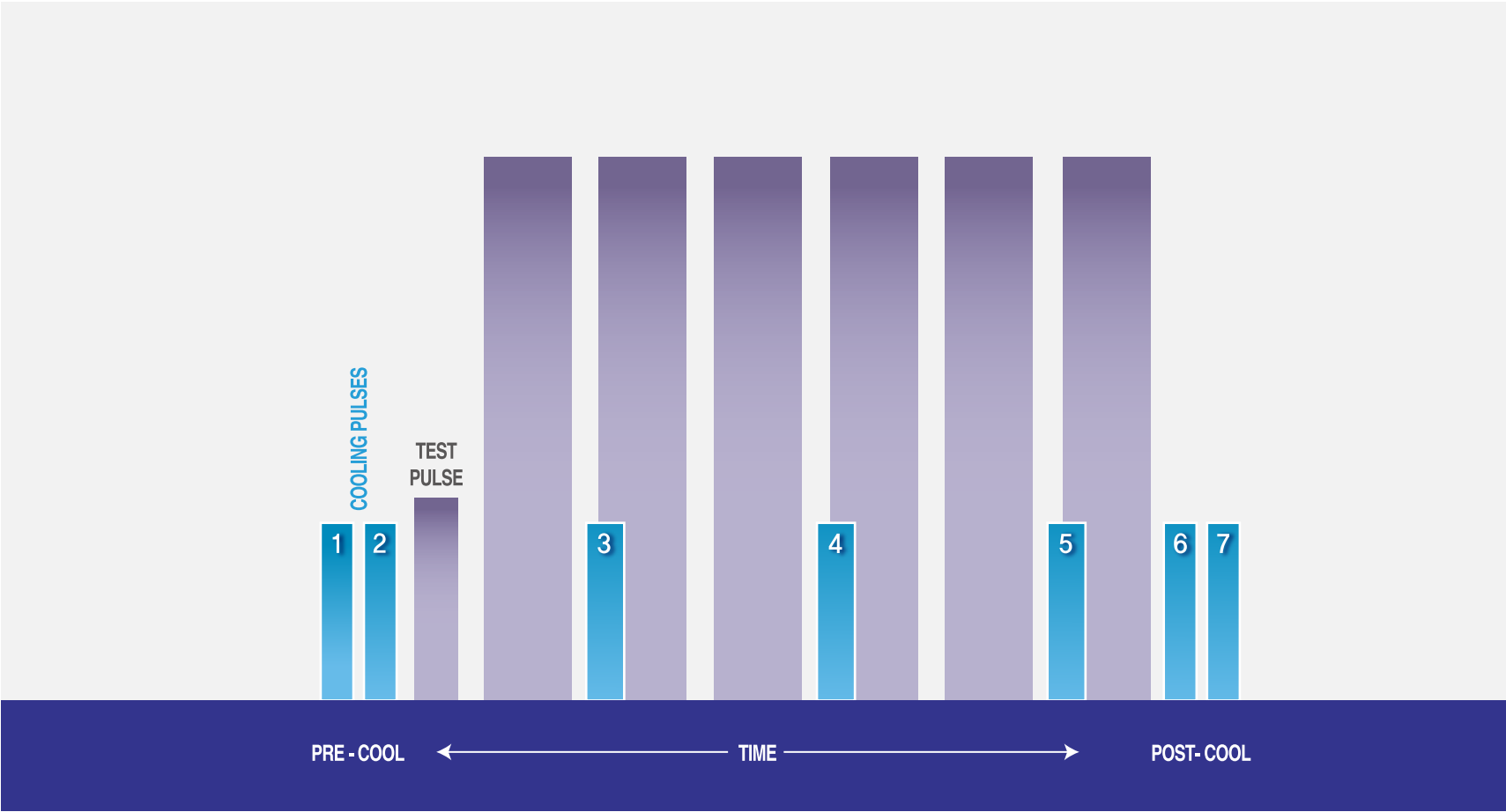
10 THERMA

- For the accurate contact between the skin and the tip, it senses the pressure applied to the tip and operates the starts and stops (prevents the skin burns)
- Pre-treatment detection
With the shot button of the hand piece pressed, it starts the treatment only when the pressure is maintained above the available pressure level of treatment.
- Detection during the treatment
When the pressure of the tip is under the level, it stops operation and prints an error message (E036-Tip Pressure Low)



Technology(Output of RF and Cooling)

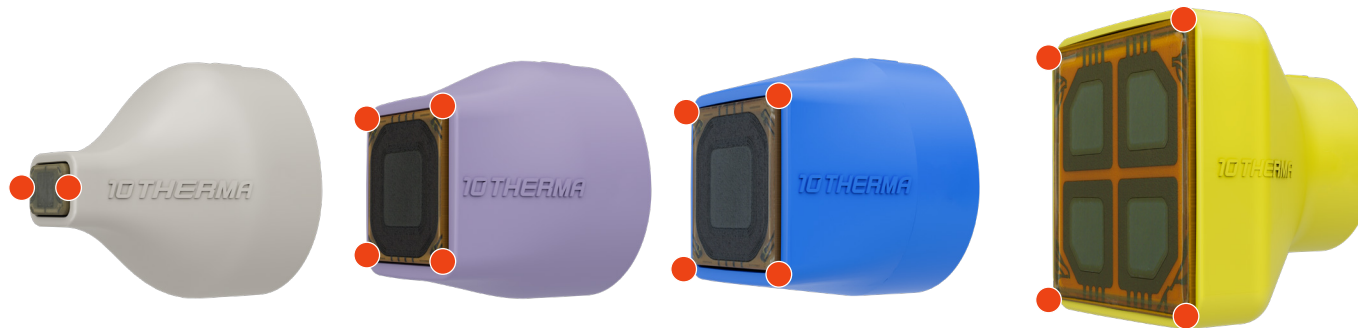
10 THERMA



Technology (Temperature sensor)

10 THERMA

- It prevents over heating, checking the temperature of the treatment area contacting the tip. (prevents the skin burns)
- If coupling fluid is not applied enough or set to an inappropriate level, temperature may rise when same area is repeatedly treated
- Each tip has temperature sensors at the corner, and the device checks their operations.
- When the temperature is above 45°C, it stops the operation, prints an error message (E037-Tip temperature too high), and stands by until it cools down.



• Temperature Sensors

Technology (Impedance Matching)

10 THERMA

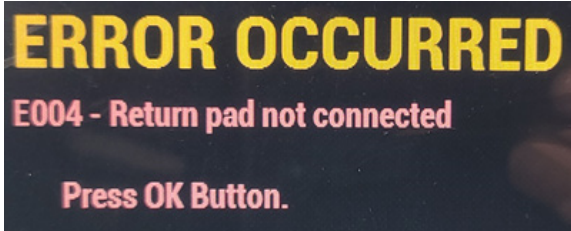
1) The first shot after the TIP recognition Impedance Measurement & Matching

Re-operates Impedance Measurement & Matching when removing or reconnecting the TIP

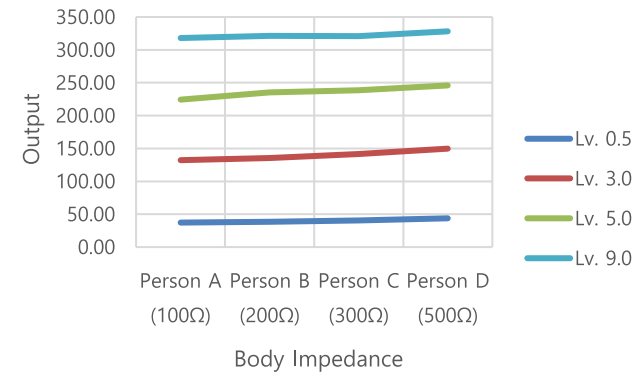


2. When an error occurs due to not connecting the return pad

Re-operates Impedance Measurement & Matching



Perfect Impedance Matching



Miss Impedance Matching(Example)



Preclinical trial results

10THERMA

Monopolar RF 10THERMA's Performance

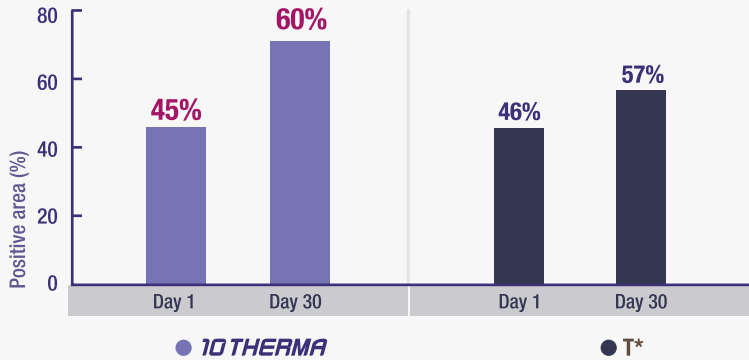
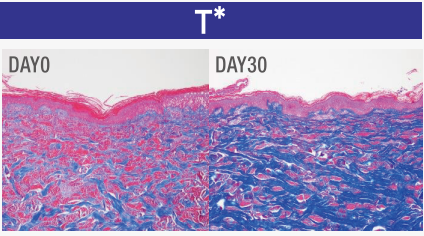
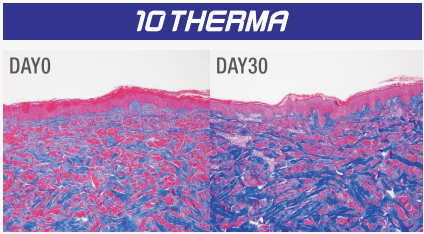
Gachon University preclinical trial completed

Tentech's (Seoul, Korea) 10THERMA® is a 6.78MHz / 400W radiofrequency device. It uses radiofrequency thermal energy to regenerate collagen and is effective in improving skin elasticity and wrinkles. It's cooling system ensures safe protection of the epidermis during the treatment.

Professor Jin Ok Baek of the Department of Dermatology at Gachon University Gil Medical Center in Korea conducted a preclinical test on two micro pigs to compare and evaluate the safety and efficacy of 10THERMA® and competitor's T*®. As a result of histopathological examination, 10THERMA showed a tendency of increase in Elastic fiber, Collagen type I, and III over time equivalent to T*®, and no results were considered abnormal values due to previous

application as a result of blood biochemical examination.

Therefore, 10THERMA® is considered to have similar efficacy and safety compared to T*®.



Jin Ok Baek, MD
Professor of Dermatology
Gachon University Gil Medical Center
Incheon, S.Korea

[Gachon University preclinical trial completed]

Gachon University preclinical data, in the area of dermal collagen, 10Therma increased by 15% whereas comparison device increased by 11%

How to Use

10 THERMA



Apply coupling fluid.



Keep the skin and handpiece / tip perpendicular



Apply appropriate pressure. Keep in full contact with skin until sound of the treatment is over

Contraindications

- Patients with implantable devices such as a cardiac pacemaker or an implantable defibrillator
- Patients with pathological abnormalities requiring prior treatment
- Women who are pregnant or breastfeeding
- Patients with lower immunity and recovery ability due to diabetes, epilepsy,
- Children
- Patients expecting unrealistic treatment effects
- Patients with symptoms of infection at the treatment areas

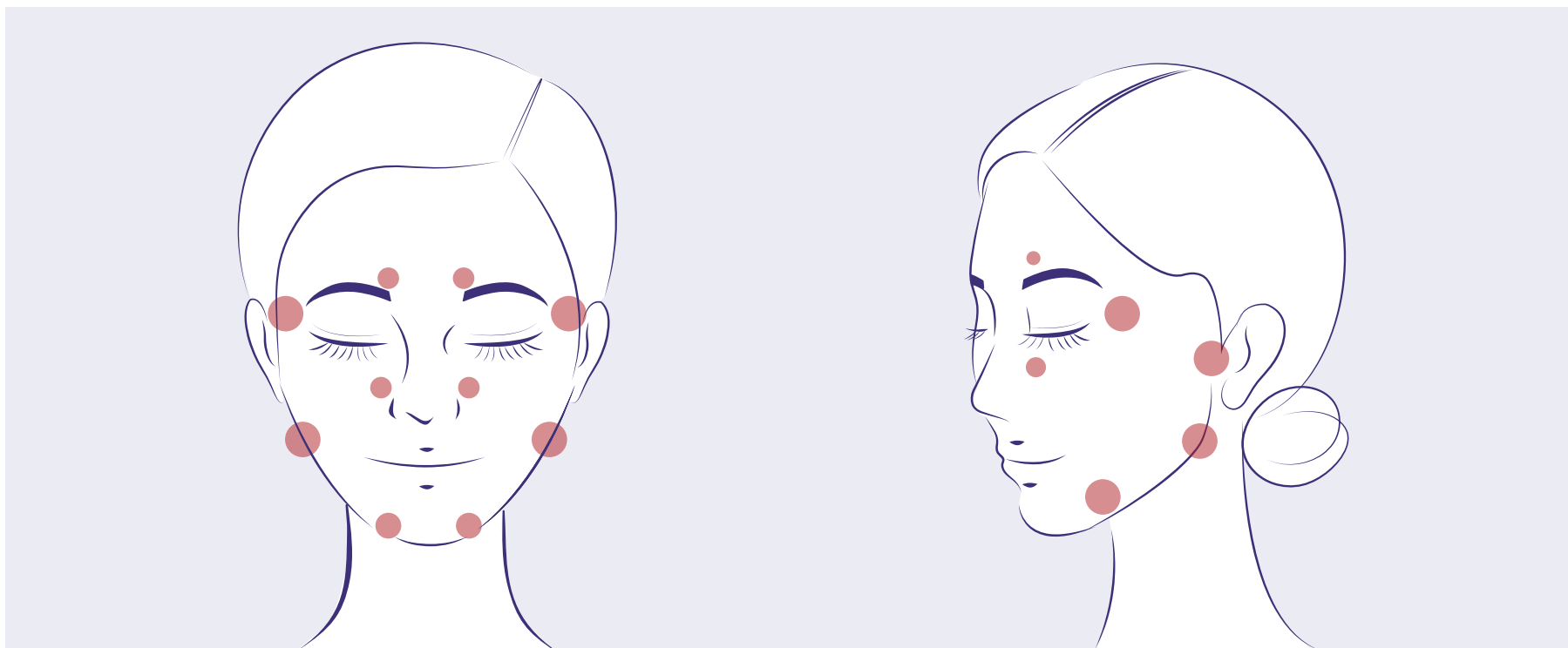
Caution

* The medical judgement by a specialist is required in the following cases.

- Patients with autoimmune diseases
- Patients with keloid
- Patients with herpes virus
- Patients with an facial implant
- Patients with a wound at the treatment area
- Patients with a new tattoo on the treatment area

Contraindications

10 THERMA



[● Sensitive areas]

Specification

10 THERMA

Energy Type	Monopolar RF
Frequency	6.78MHz
Max. RF Power	400W
Impedance Range	75~400Ω
Tips	Tip 0.25cm ² Tip 5.0cm ² Tip 20.0cm ²
Dimension	W 405 x L 560 x H 1245mm
Weight	46kg
Electrical Requirement	AC 100 V - 240 V, 50/60 Hz, 600 VA



10 THERMA

Monopolar RF / 6.78MHz / 400W

All information in this document is subject to copyrights and other intellectual property rights of Tentech Inc. and other licensees. No modification, reproduction or copy of any or any part of this material may be made without prior written permission from Tentech Inc. and licensees. Additional information is available upon request. The following are trademarks or registered trademarks of Tentech, Inc. in Korea and other countries.

